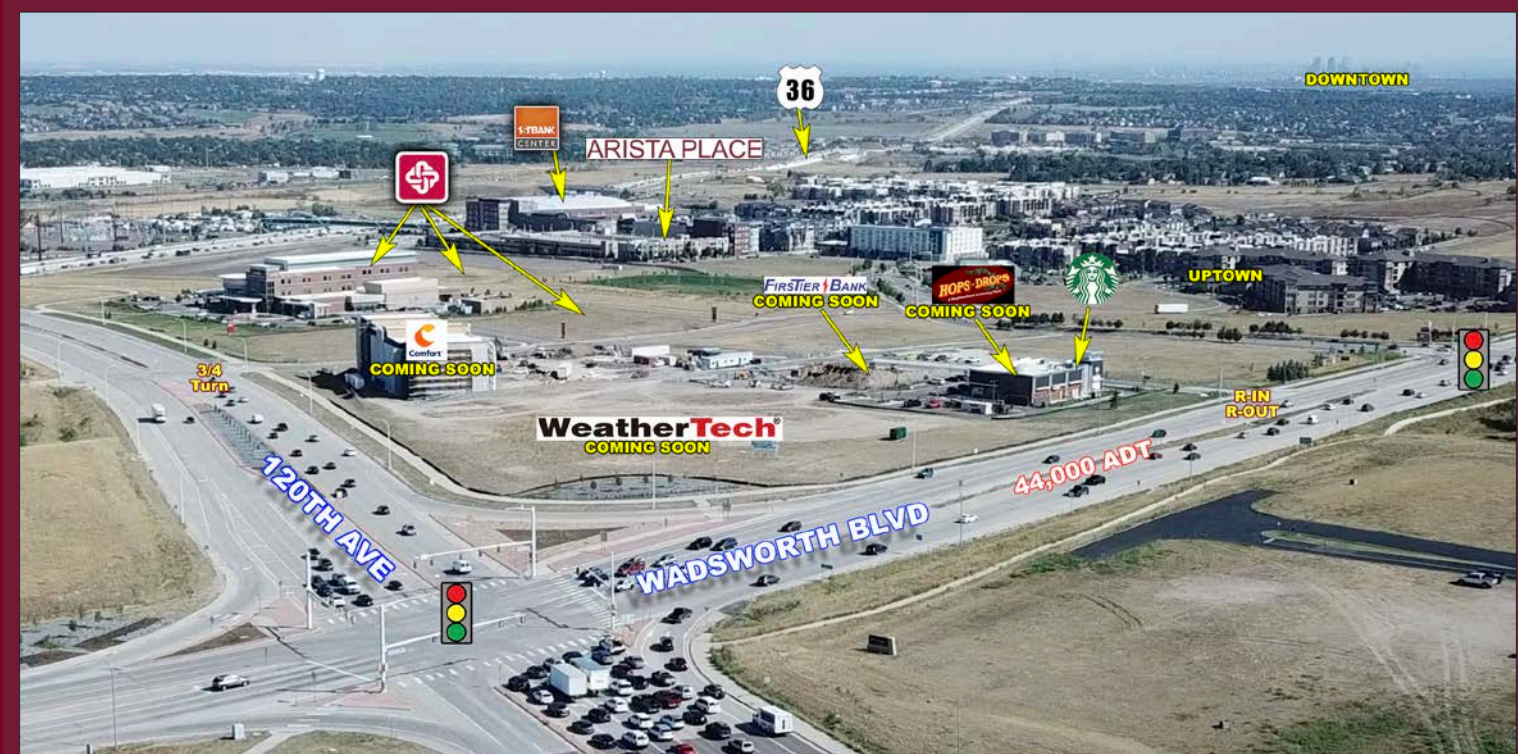


ANCHOR, INLINE & PADS AVAILABLE AT TURNPIKE SHOPS

SEC WADSWORTH BLVD & 120TH AVE @ HWY 36 | BROOMFIELD, CO



TRAFFIC COUNTS

On Hwy 36 northwest of Wadsworth Blvd	90,000 cars/day
On Hwy 36 southeast of Wadsworth Blvd	89,000 cars/day
On Wadsworth Blvd north of Hwy 36	55,000 cars/day
On Wadsworth Blvd south of Hwy 36	44,000 cars/day

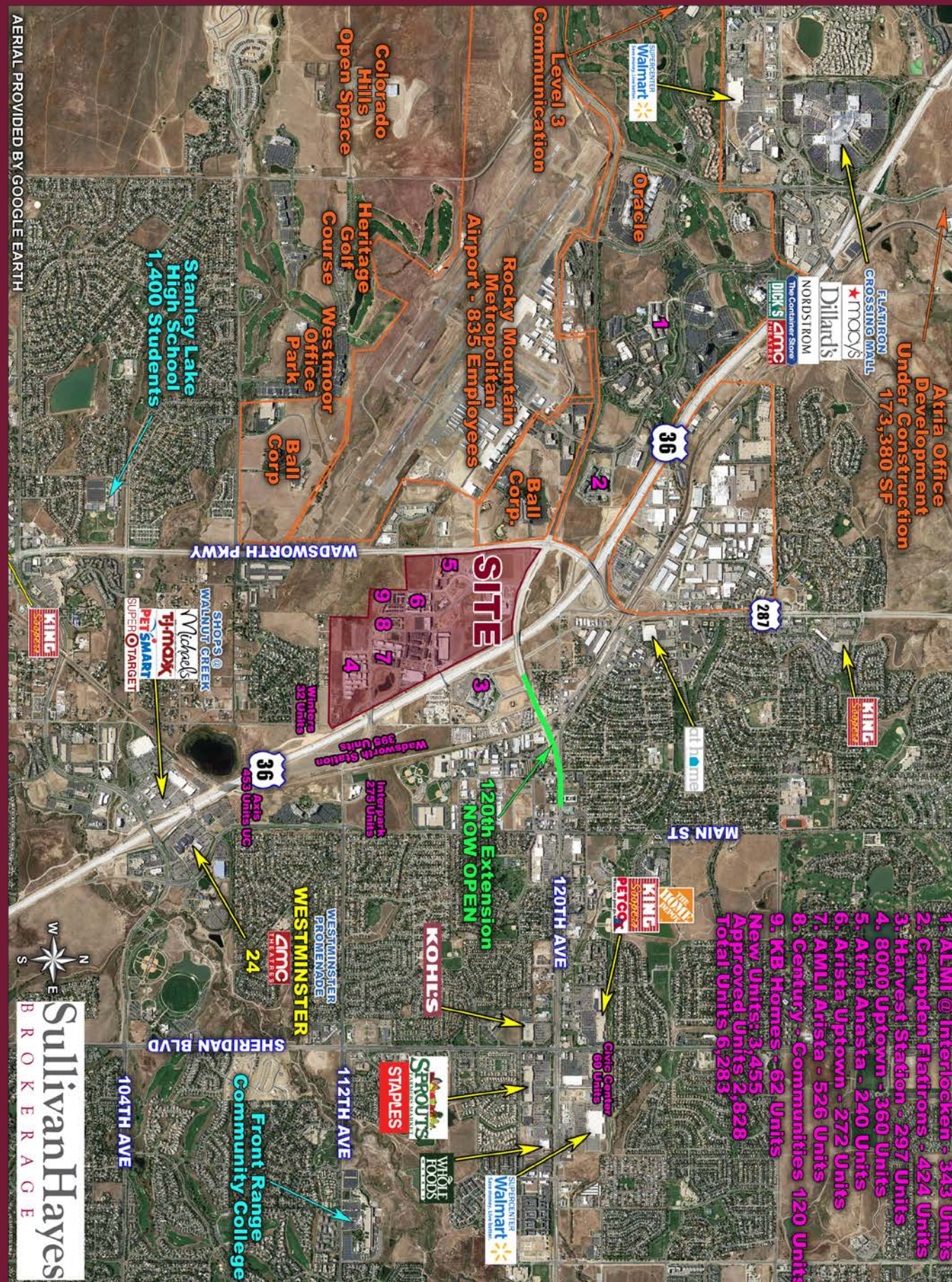
Source: CDOT 2016

DEMOGRAPHICS

	1 MILE	3 MILE	5 MILE
Est. Population	3,560	71,606	211,724
Avg Household Inc	\$68,878	\$99,227	\$98,126
Employees	6,403	45,249	84,377*
Businesses	513	3,402	7,462

Demographics Source: Applied Geographic Solutions 2017

5570 DTC Parkway, Suite 100 | Greenwood Village, CO 80111 | 303.534.0900 Fax: 303.831.1333 | www.sullivanhayes.com



1. ALMI @ Interlocken - 343 Units
 2. Campden Flatirons - 424 Units
 3. Harvest Station - 297 Units
 4. 8000 Uptown - 360 Units
 5. Atria Anasta - 240 Units
 6. Atria Uptown - 272 Units
 7. AMLI Arista - 526 Units
 8. Century - Communities 120 Units
 9. KB Homes - 62 Units
- New Units: 3,455
Approved Units: 2,828
Total Units: 6,283

The information contained herein has been compiled from sources believed to be reliable. However, SullivanHayes has not independently verified the same and makes no guarantee, warranty or representation about such information. Any opinions, assumptions or projections used are for illustrative purposes only and do not necessarily represent the current or future performance of the property. Site plans, renderings, aerials, marketing data, pricing and other terms are subject to change at any time. You and your tax, financial and legal advisors should make a thorough independent investigation of the property to determine its suitability to your needs. SullivanHayes, its broker associates and its salespersons, are or will be acting as agents of the seller/lessor with the duty to represent the interests of the seller/lessor. SullivanHayes will not act as your agent unless an agency agreement is signed and in effect.

SullivanHayes
B R O K E R A G E

weare
RETAIL
A MEMBER OF
CHAINLINKS
RETAIL ADVISORS
AGENCY
DISCLOSURE

Bryan Slaughter
303.370.7459 | bslaughter@sullivanhayes.com
Mark Ernster
720.382.7508 | mernster@sullivanhayes.com

